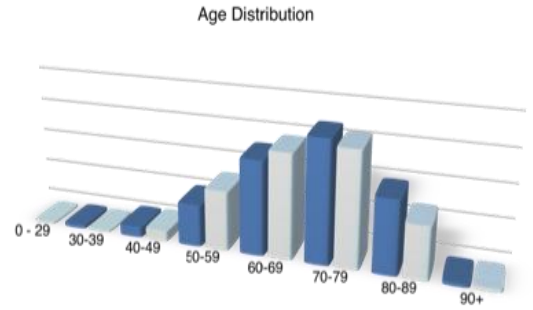


	SRMH	National
0-29	0%	0.5%
30-39	1%	0.5%
40-49	3%	3%
50-59	12%	17%
60-69	27%	30%
70-79	35%	33%
80-89	21%	15%
90+	1%	1%

Santa Rosa Memorial data mirrors that of the national comparison data for age distribution of non small cell lung cancer.



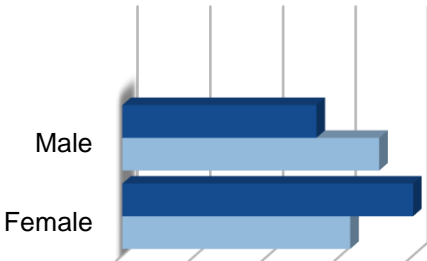
Sex Distribution

Sex distribution notes Santa Rosa Memorial patients to be slightly reversed over the national comparison figures with there being more female NSCLC patients over male.

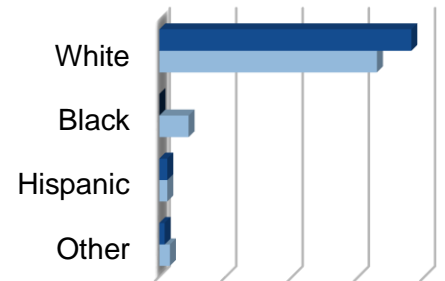
	SRMH	National
White	95%	82%
Black	0%	11%
Hispanic	3%	3%
Other	2%	4%

Racial breakdown for Santa Rosa Memorial note a 13% higher rate of white patients over that of the national data, however this is consistent with the local population demographics.

Race Distribution

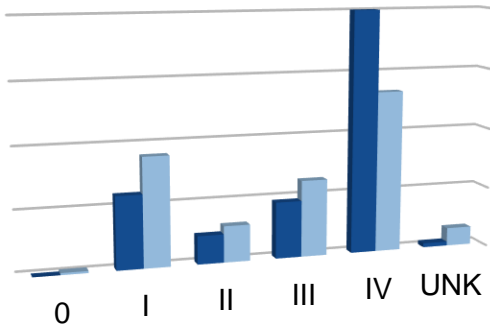


	SRMH	National
Male	40%	53%
Female	60%	47%



Stage Distribution

Stage distribution notes Santa Rosa Memorial patients to be nearly the same as that of the national data with the exception of stage 4 (distant), however this does coincide with patients seen for comorbidities in which cancer care is provided at outside facilities.



Treatment Distribution

	SRMH	National
0	0%	0.5%
I	18%	27%
II	7%	9%
III	14%	19%
IV	60%	40%
UNK	1%	4.5%

	SRMH	National
None/Biopsy Only	34%	19%
Surgery Only	8%	20%
Radiation Only	11%	15%
Chemotherapy Only	16%	12%
Surgery and Radiation	1%	1%
Surgery and Chemotherapy	1%	6%
Radiation and Chemotherapy	28%	21%
Chemotherapy and Hormones	0%	2%
Surgery, Radiation, Chemotherapy	1%	4%

Santa Rosa Memorial Hospital Non Small Cell Lung Cancer - 2016 Comparison Report, with 2014 Data

NCCN Guideline; NSCL-1; Clinical Stage 1,2,3 = Smoking cessation advice and counseling are offered.

Queen of the Valley Hospital data;

Tobacco Users	27 = 59%
Smoking cessation discussion noted	26 = 96%

2016 Assessment of Evaluation and Treatment Planning Non Small Cell Carcinoma

STUDY PURPOSE: To assess if Stage I Non Small Cell Lung Carcinoma cases diagnosed and treated at Santa Rosa Memorial Hospital have diagnostic work-up and treatment based on NCCN Guidelines.

CoC Cancer Program Requirement: Std 4.6; Assessment and Evaluation of Treatment Planning: Each year, a physician member of the cancer committee performs a study to assess whether patients within the program are evaluated and treated according to evidence-based national treatment guidelines. The study must determine that the diagnostic evaluation is adequate and the treatment plan is concordant with a recognized guideline.

Background:

The study conducted by Cancer Committee this year analyzed the diagnostic and treatment patterns of Non Small Cell Lung Carcinoma patients compared to the NCCN (National Comprehensive Cancer Network) Version 4.2016.

Study Criteria: Site Specific Sample based on identified need or concern:

Site Specific Sample:	Non Small Cell Lung Carcinoma
Accession Year:	2014, Class of Case 10-22
Focus on AJCC Clinical Stages:	Stage IA: T1a, N0, M0; T1b, N0, M0 Stage IB: T2a, N0, M0

2014 Total Cases: Stage I = 20

Data reviewed for each case included looking at the patient's age, diagnostic workup, clinical stage, and first course of treatment documented in the Cancer Registry (CR) abstract.

Diagnostic Evaluation and Primary Treatment based on NCCN Guideline:

Preliminary workup following a positive biopsy for a suspicious mass:

- * Pathology Diagnostic Report should contain: Histologic classification as described by the WHO for carcinomas of the lung.
- * H&P with attention to performance status, documented positive weight loss.
- * CT Chest and Upper Abdomen to include adrenals.
- * Pulmonary Function Tests (PFT's)
- * Smoking cessation advise, counseling and/or pharmacotherapy.

Primary Treatment:

- * Stage IA and Stage IB: surgical resection with mediastinal lymph node dissection with at least 10 lymph nodes removed.

2014 SRMH Non Small Cell Lung Carcinoma Cases: Study Assessment Summary:

A review of all of the NSCLC cases for 2014 showed a total of 120 cases of non small cell lung carcinoma were accessioned by the SRMH Cancer Registry. (21) Stage I, (8) Stage 2, (17) Stage 3, (72) Stage 4 and (2) Unk Stage. 40% males and 60% females. 100% histologically confirmed diagnosis. Ethnicity: 95% White, 3% Hispanic, 2% Asian. Ages ranged at diagnosis 37 to 92 with median age at diagnosis being 68 years of age.

SANTA ROSA MEMORIAL HOSPITAL - 2015 PRIMARY SITE TABLE

Primary Site	Total	Class		Sex		AJCC Stage				
		A	N/A	M	F	0	I	II	III	IV
All Sites	902	726	176	408	494	52	171	110	65	172
Oral Cavity	24	20	4	20	4	0	2	1	1	13
Lip	0	0	0	0	0	0	0	0	0	0
Tongue	6	4	2	5	1	0	0	0	0	4
Oropharynx	1	1	0	0	1	0	0	0	0	1
Hypopharynx	2	2	0	1	1	0	0	0	0	0
Other	15	13	2	14	1	0	2	1	1	8
Digestive System	149	122	27	84	65	0	11	20	22	41
Esophagus	14	12	2	14	0	0	0	3	1	2
Stomach	12	8	4	9	3	0	1	0	0	3
Colon	47	42	5	21	26	0	6	7	11	16
Rectum	21	16	5	11	10	0	3	2	4	5
Anus/Anal Canal	6	6	0	2	4	0	0	2	1	1
Liver	16	8	8	12	4	0	0	0	1	3
Pancreas	29	27	2	12	17	0	1	5	3	11
Other	4	3	1	3	1	0	0	1	1	0
Respiratory System	130	109	21	64	66	2	10	8	9	55
Larynx	4	4	0	3	1	0	1	1	0	1
Other	2	2	0	2	0	0	0	0	0	2
Lung/Bronc-Small Cell	13	12	1	6	7	0	0	0	1	7
Lung/Bronc-Non Small Cell	89	80	9	43	46	2	9	7	8	42
Other Bronchus & Lung	22	11	11	10	12	0	0	0	0	3
Blood & Bone Marrow	53	33	20	28	25	0	0	1	0	0
Leukemia	33	18	15	18	15	0	0	1	0	0
Multiple Myeloma	13	11	2	7	6	0	0	0	0	0
Other	7	4	3	3	4	0	0	0	0	0
Bone	1	1	0	1	0	0	0	0	0	0
Connect/Soft Tissue	5	3	2	3	2	0	0	0	1	0
Skin	64	58	6	36	28	13	24	7	1	3
Melanoma	61	55	6	35	26	13	24	7	1	3
Other	3	3	0	1	2	0	0	0	0	0
Breast	191	164	27	6	185	23	81	44	8	7
Female Genital	52	42	10	0	52	2	12	1	11	13
Cervix Uteri	8	7	1	0	8	0	1	0	3	2
Corpus Uteri	24	21	3	0	24	0	10	1	3	5
Ovary	15	11	4	0	15	0	1	0	5	6
Vulva	3	2	1	0	3	2	0	0	0	0
Other	2	1	1	0	2	0	0	0	0	0
Male Genital	70	44	26	70	0	1	8	18	1	12
Prostate	67	41	26	67	0	1	5	18	1	12
Testis	3	3	0	3	0	0	3	0	0	0
Urinary System	54	42	12	45	9	11	8	4	4	7
Bladder	39	33	6	33	6	11	7	4	0	3
Kidney/Renal	15	9	6	12	3	0	1	0	4	4
Brain & Cns	27	21	6	11	16	0	0	0	0	0
Brain (Benign)	8	5	3	4	4	0	0	0	0	0
Brain (Malignant)	10	9	1	5	5	0	0	0	0	0
Other	9	7	2	2	7	0	0	0	0	0
Endocrine	19	14	5	5	14	0	6	0	3	4
Thyroid	18	13	5	5	13	0	6	0	3	4
Other	1	1	0	0	1	0	0	0	0	0
Lymphatic System	43	37	6	23	20	0	9	6	3	17
Hodgkin's Disease	3	3	0	1	2	0	0	2	0	1
Non-Hodgkin's	40	34	6	22	18	0	9	4	3	16
Unknown Primary	15	12	3	8	7	0	0	0	0	0
Other/III-Defined	5	4	1	4	1	0	0	0	1	0